



PRESE DI CORRENTE SERIE "FSCQ" - RECEPTACLES SERIES "FSCQ"

MODO DI PROTEZIONE - PROTECTION MODE:
II 2GD Ex d IIC T6/66 (Ambient temperature -20°C/-60°C to +40°C)

CERTIFICATO - CERTIFICATE: ATEX, IECEx, GOST-R

Prese antideflagranti con sezionatore incorporato e interbloccati attraverso la rotazione della spina in modo che questa possa essere infilata o estratta solo a circuito aperto. Le prese FSCQ 363 sono fornite di fusibili di protezione.

MATERIALI: Corpo: in alluminio, dadi e le viti in acciaio inossidabile.

FILETTATURA: GAS UNI 6125 or NPT a richiesta

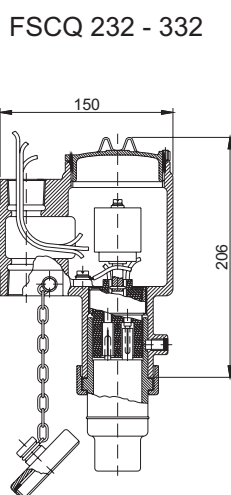
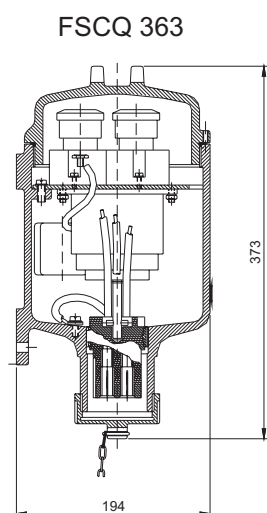
VERNICIATURA STANDARD: Epossidica colore grigio RAL 7037

Explosion-proof receptacle with incorporated load switch. They are interlocked by the position of the plug in order that same can be inserted and taken off only when the circuit is open. The receptacle FSCQ 363 are furnished of fuses.

MATERIALS: Body: light alloy casting, bolt and screws: stainless steel

THREADS: GAS UNI 6125 or NPT on request.

STANDARD PAINTING: Grey epoxy RAL 7037



Codice Code	N° di poli Poles N°	Carico - Load		Ø imbrocchi Ø Holes	Tipo di spina Plugs type	Peso Kg Weight Kg	Note Notes
		Volt	Ampere				
FSCQ232/.*	2 + E	max 690*	16/32	2 x 1"	FPA2	2,3	Interruttore controllato con rotazione spina Switch controlled by plug rotation
FSCQ332/.*	3 + E	max 690*	16/32	2 x 1"	FPA3	2,3	
FSCQ363/.*	3 + E	max 690*	63	2 x 1 1/2"	FP363	8,5	c.s. ma con interruttore e fusibili As above but with switch and fuses

LEGENDA CODICI PER TENSIONE

V(viola)=20/25V, **W(bianco)**=40/50V, **G(giallo)**=100/130V,
B(blu)=200/250V, **R(rosso)**=380/460V, **N(nero)**=480/690V
Esempio per ordinare: FSCQ232/B (2x16/32A 200/250V)

VOLTAGE COLOURS

V(violet)=20/25V, **W(white)**=40/50V, **G(yellow)**=100/130V,
B(blue)=200/250V, **R(red)**=380/460V, **N(black)**=480/690V
Example to order: FSCQ232/B (2x16/32A 200/250V)





SPINE PER PRESE DI CORRENTE - PLUGS FOR RECEPTACLES

MODO DI PROTEZIONE - *PROTECTION MODE*:
II 2GD Ex d IIC T6 IP66 (Ambient temperature -20°C/-60°C to +40°C)

CERTIFICATO - *CERTIFICATE* ATEX, IECEx, GOST-R

Le spine antideflagranti di seguito mostrate, vengono utilizzate esclusivamente in abbinamento alla presa corrispondente FP-363 con FSCQ-363 FP-A2 con le FSCQ-216/232 e FP-A2 con le FSCQ-316/332.

MATERIALI: Corpo: lega leggera, dadi e viti in acciaio inossidabile 18/8

FILETTATURA: GAS UNI 6125 o NPT a richiesta.

VERNICIATURA STANDARD: Epossidica color grigio RAL 7037

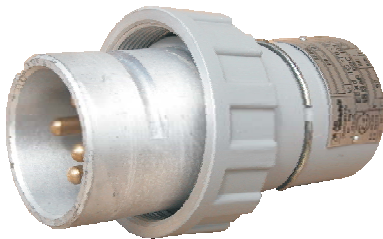
The plugs for explosion proof receptacles shown herebelow are suitable for use only with the corresponding type of receptacles.

MATERIALS: Body: light alloy casting, bolt and screws: 18/8 stainless steel

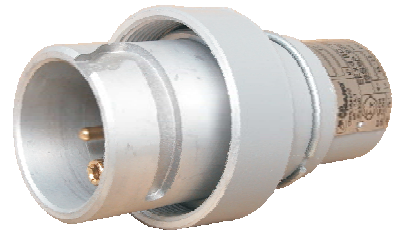
THREADS: GAS UNI 6125 or NPT on request.

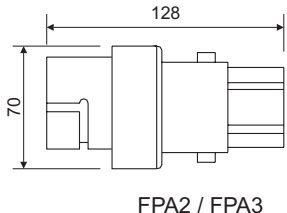
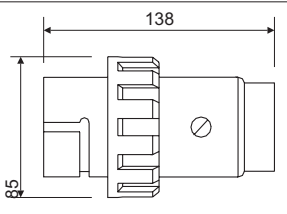
STANDARD PAINTING: Grey epoxy RAL 7037

FP363



FPA2
FPA3



ILLUSTRAZIONI ILLUSTRATIONS	CODICE CODE	N° POLI POLES N°	MAX AMP.	PER PRESA FOR RECEPTACLES	PESO KG WEIGHTKG	CARATTERISTICHE CHARACTERISTICS
 <p>FPA2 / FPA3</p>	FPA2	2 + E	16/32	FSCQ 232	0,4	Imbocco - <i>hole</i> \varnothing 3/4" a richiesta - on request \varnothing 1"
	FPA3	3 + E	16/32	FSCQ 332	0,4	
 <p>Fp363</p>	FP363	3 + E	63	FSCQ 363	0,65	Imbocco - <i>hole</i> \varnothing 1 1/2" a richiesta - on request \varnothing 1 1/4"

LEGENDA CODICI PER TENSIONE

V(viola)=20/25V, **W(bianco)**=40/50V, **G(giallo)**=100/130V,
B(blu)=200/250V, **R(rosso)**=380/460V, **N(nero)**=480/690V
 Esempio per ordinare: FSCQ232/B (2x16/32A 200/250V)

VOLTAGE COLOURS

V(violet)=20/25V, **W(white)**=40/50V, **G(yellow)**=100/130V,
B(blue)=200/250V, **R(red)**=380/460V, **N(black)**=480/690V
 Example to order: FSCQ232/B (2x16/32A 200/250V)

