

<p>DESCRIZIONE Barre colletrici</p>	<p>ARTICOLO ACCESSORI DI CONNESSIONE PER IMPIANTI DI TERRA <i>Connection fittings for earthing systems</i></p>	<p>DESCRIPTION Marshalling busbar</p>
--	---	--

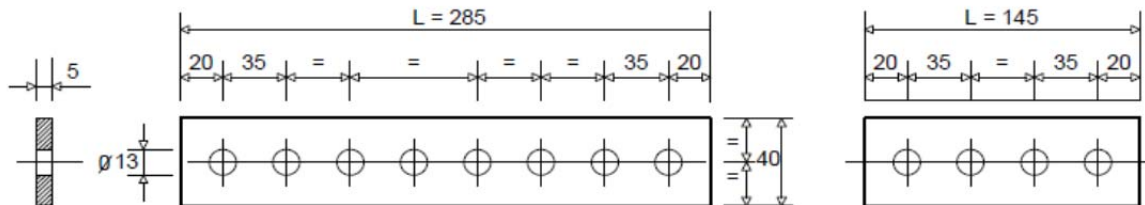


Fig. A SBARRETTE COLLETRICI
MARSHALLING BUS BARS

(Fissaggio con zanche su muratura o struttura
Fastening with rang bolts on masonry or metallic structure)

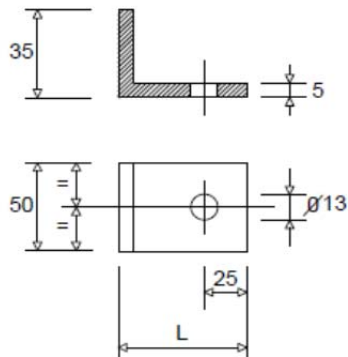


Fig.B
PIASTRA DI
CONNESSIONE
CONNECTION
PLATE

(Saldata su struttura
metallica
Welded on metallic
structure)

(Dimensioni in mm)
(Dimensions in mm)

Fig.	Lunghezza <i>Lenght</i> L	Materiale <i>Material</i>
A	285	Piatto in rame stagnato per immersione <i>Tinned copper plate with hot dip process</i>
	145	
	285	Piatto in acciaio inossidabile: - per ambienti marini; X2CrNiMo 1712 (AISI 316L) con carico di rottura alla trazione 520 N/mm ² (MPa).
	145	
B	55	<i>Stainless steel plate:</i> - for marine environments; X2CrNiMo 1712 (AISI 316L), tensile strenght 520 N/mm ² (MPa).
	105	

DESCRIZIONE Capicorda e connettori	ARTICOLO ACCESSORI DI CONNESSIONE PER IMPIANTI DI TERRA <i>Connection fittings for earthing systems</i>	DESCRIPTION Clamps and connectors
---------------------------------------	--	--------------------------------------

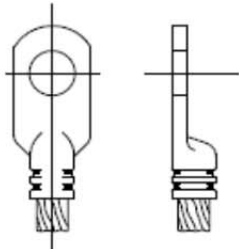


Fig. A CAPOCORDA A COMPRESIONE
COMPRESSION TYPE LUG

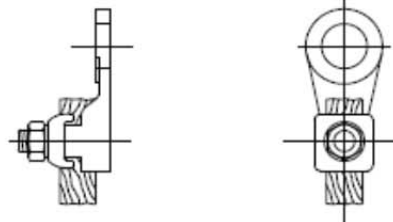


Fig. D CAPOCORDA A MORSETTO
CLAMP TYPE LUG

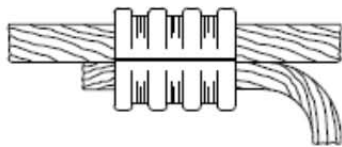


Fig. E CONNETTORE A COMPRESIONE
COMPRESSION TYPE CONNECTOR

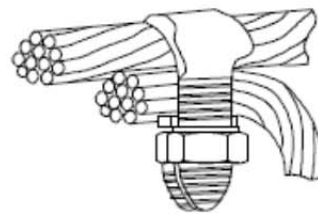


Fig. F CONNETTORE A MORSETTO
CLAMP TYPE CONNECTOR

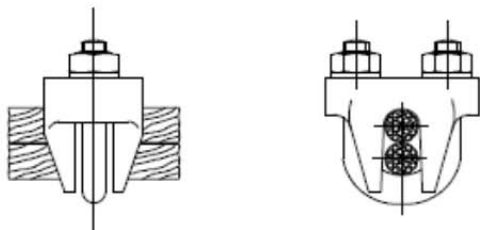


Fig. G CONNETTORE A MORSETTO
CLAMP TYPE CONNECTOR

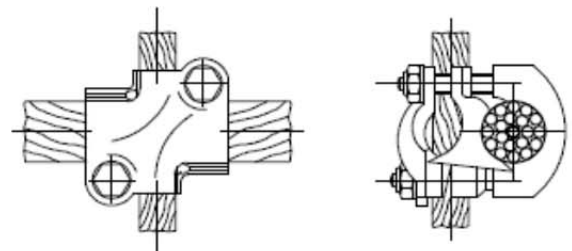


Fig. H CONNETTORE A MORSETTO
CLAMP TYPE CONNECTOR

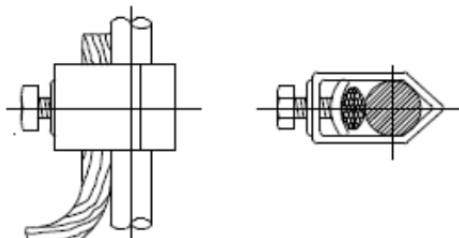


Fig. L CONNETTORE A MORSETTO PER FERRO
TONDO O ELETTRODO
CLAMP TYPE CONNECTOR FOR ROUND
IRON ON ELECTRODE

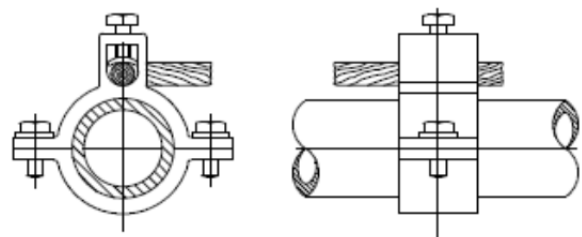


Fig. M CONNETTORE A MORSETTO PER TUBI
CLAMP TYPE CONNECTOR FOR PIPE

DESCRIZIONE Connettori / Tracce di rame	ARTICOLO ACCESSORI DI CONNESSIONE PER IMPIANTI DI TERRA <i>Connection fittings for earthing systems</i>	DESCRIPTION Connectors and flex copper braid
--	--	--

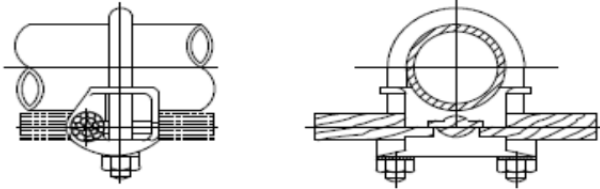


Fig. N CONNETTORE A MORSETTO PER TUBO
CLAMP TYPE CONNECTOR FOR PIPE

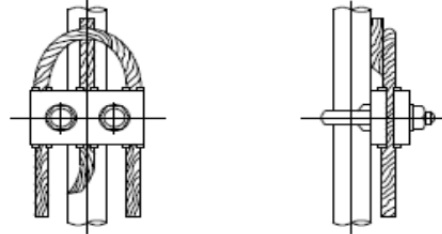


Fig. P CONNETTORE A MORSETTO PER TUBO
O FERRO TONDO
CLAMP TYPE CONNECTOR FOR PIPE OR
ROUND IRON

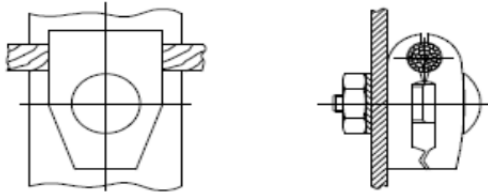


Fig. Q CONNETTORE A MORSETTO SU
SUPERFICE PIANA
CLAMP TYPE CONNECTOR ON PLANE
SURFACE

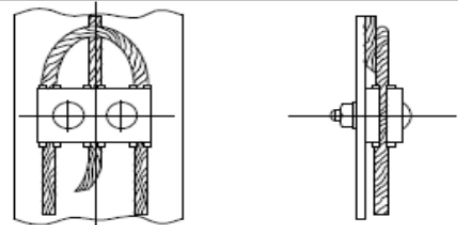


Fig. R CONNETTORE A MORSETTO SU
SUPERFICE PIANA
CLAMP TYPE CONNECTOR ON PLANE
SURFACE

BULLONE A ZANCA PER FISSAGGIO DELLE BARRE DI TERRA
HOOK BOLT FOR GROUND PLATES FASTENIN

FIG. T

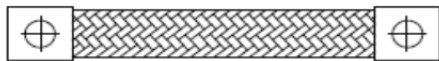


Fig. S CONNETTORE A TRECCIA FLESSIBILE
DI RAME
FLEXIBLE COPPER PLAIT TYPE
CONNECTOR

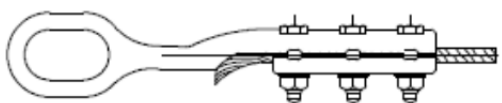
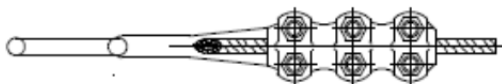


Fig. U MORSETTO DI AMARRO PER FUNE
METALLICA
MOORING CLAMP FOR WIRE ROPE

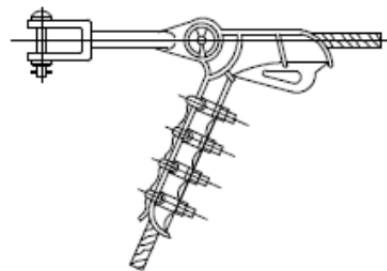


Fig. V MORSETTO DI AMARRO PER FUNE
METALLICA
MOORING CLAMP FOR WIRE ROPE