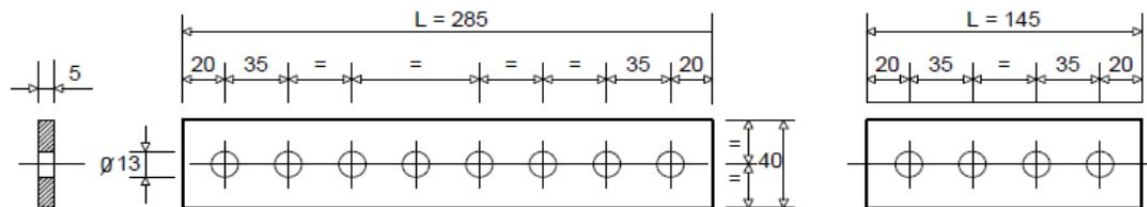
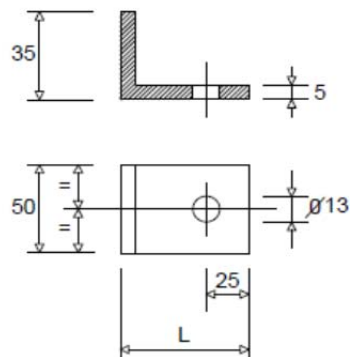


<b>DESCRIZIONE</b> Barre colletrici	<b>ARTICOLO</b> ACCESSORI DI CONNESSIONE PER IMPIANTI DI TERRA <i>Connection fittings for earthing systems</i>	<b>DESCRIPTION</b> Marshalling busbar
--	---	--



**Fig. A** SBARRETTE COLLETRICI  
 MARSHALLING BUS BARS

( Fissaggio con zanche su muratura o struttura  
 Fastening with rang bolts on masonry or metallic structure )



**Fig.B**  
 PIASTRA DI  
 CONNESSIONE  
 CONNECTION  
 PLATE

( Saldata su struttura  
 metallica  
 Welded on metallic  
 structure )

(Dimensioni in mm)  
 (Dimensions in mm)

Fig.	Lunghezza Lenght L	Materiale Material
A	285	Piatto in rame stagnato per immersione <i>Tinned copper plate with hot dip process</i>
	145	
	285	Piatto in acciaio inossidabile: - per ambienti marini; X2CrNiMo 1712 (AISI 316L) con carico di rottura alla trazione 520 N/mm <sup>2</sup> (MPa).
	145	
B	55	<i>Stainless steel plate:</i> - for marine environments; X2CrNiMo 1712 (AISI 316L), tensile strenght 520 N/mm <sup>2</sup> (MPa).
	105	

DESCRIZIONE Capicorda e connettori	ARTICOLO ACCESSORI DI CONNESSIONE PER IMPIANTI DI TERRA <i>Connection fittings for earthing systems</i>	DESCRIPTION Clamps and connectors
---------------------------------------	--	--------------------------------------

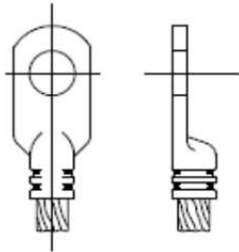


Fig. A CAPOCORDA A COMPRESSIONE  
COMPRESSION TYPE LUG

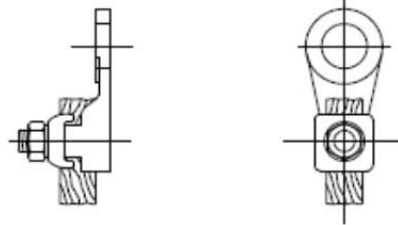


Fig. D CAPOCORDA A MORSETTO  
CLAMP TYPE LUG

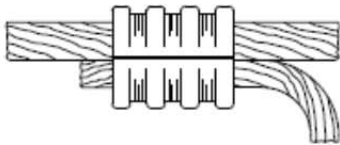


Fig. E CONNETTORE A COMPRESSIONE  
COMPRESSION TYPE CONNECTOR

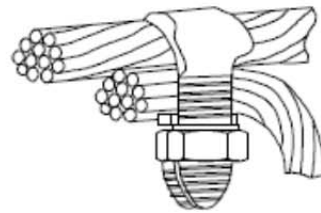


Fig. F CONNETTORE A MORSETTO  
CLAMP TYPE CONNECTOR

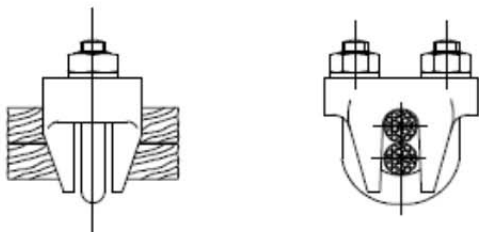


Fig. G CONNETTORE A MORSETTO  
CLAMP TYPE CONNECTOR

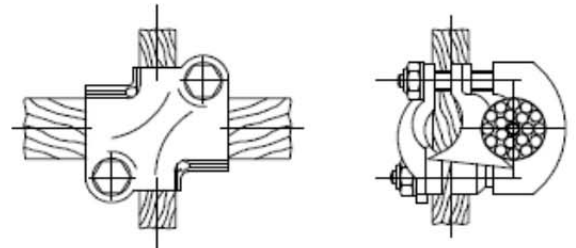


Fig. H CONNETTORE A MORSETTO  
CLAMP TYPE CONNECTOR

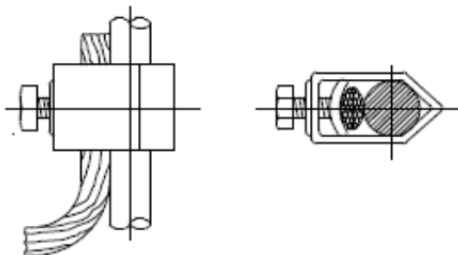


Fig. L CONNETTORE A MORSETTO PER FERRO  
TONDO O ELETTRODO  
CLAMP TYPE CONNECTOR FOR ROUND  
IRON ON ELECTRODE

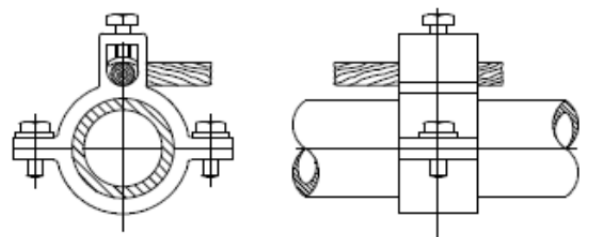


Fig. M CONNETTORE A MORSETTO PER TUBI  
CLAMP TYPE CONNECTOR FOR PIPE

DESCRIZIONE Connettori / Tracce di rame	ARTICOLO ACCESSORI DI CONNESSIONE PER IMPIANTI DI TERRA <i>Connection fittings for earthing systems</i>	DESCRIPTION Connectors and flex copper braid
--	--	--

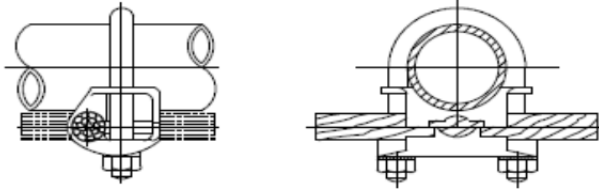


Fig. N CONNETTORE A MORSETTO PER TUBO  
CLAMP TYPE CONNECTOR FOR PIPE

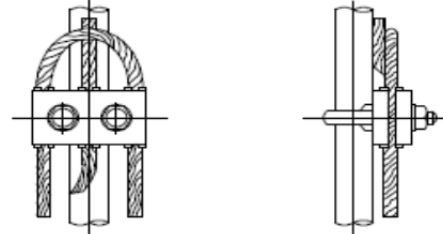


Fig. P CONNETTORE A MORSETTO PER TUBO  
O FERRO TONDO  
CLAMP TYPE CONNECTOR FOR PIPE OR  
ROUND IRON

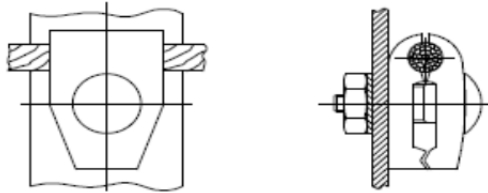


Fig. Q CONNETTORE A MORSETTO SU  
SUPERFICE PIANA  
CLAMP TYPE CONNECTOR ON PLANE  
SURFACE

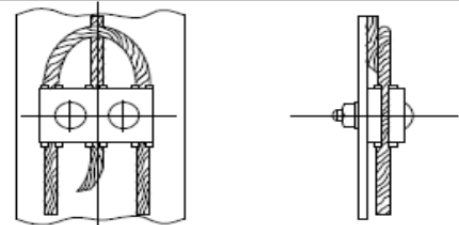


Fig. R CONNETTORE A MORSETTO SU  
SUPERFICE PIANA  
CLAMP TYPE CONNECTOR ON PLANE  
SURFACE

BULLONE A ZANCA PER FISSAGGIO DELLE BARRE DI TERRA  
HOOK BOLT FOR GROUND PLATES FASTENIN  
FIG. T

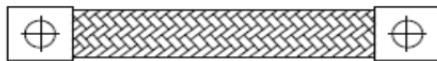


Fig. S CONNETTORE A TRECCIA FLESSIBILE  
DI RAME  
FLEXIBLE COPPER PLAIT TYPE  
CONNECTOR

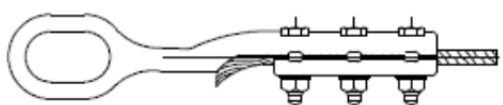
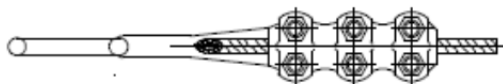


Fig. U MORSETTO DI AMARRO PER FUNE  
METALLICA  
MOORING CLAMP FOR WIRE ROPE

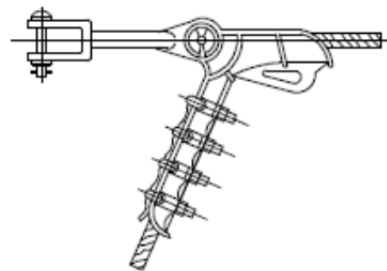


Fig. V MORSETTO DI AMARRO PER FUNE  
METALLICA  
MOORING CLAMP FOR WIRE ROPE