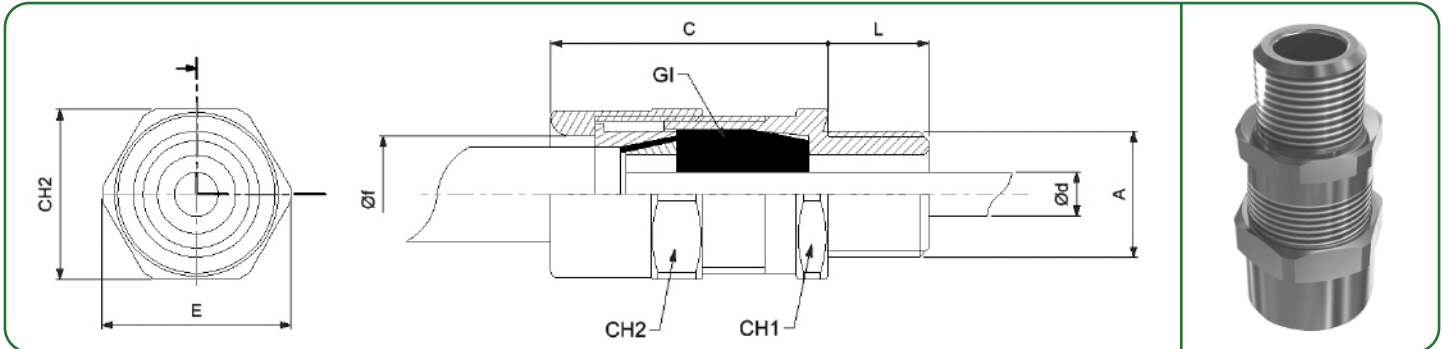


series  
PA

# CABLE GLAND single compression for armoured cable



**Group:** II  
**Category:** 2GD  
**Protection mode against gas:**  
 Ex d IIC Gb Ex e IIC Gb  
**Protection mode against dust:**  
 Ex tb IIIC Db IP66  
**Materials:** Nickel Plated Brass (B)  
 Stainless Steel AISI 316L (S)  
**Threading:** NPT - ANSI/ASME B1.20.1  
 ISO 262 and ISO 965-1/2/3  
**Operating Temperature:**  
 -40°C ÷ +100°C elastom. rings EPDM  
 -60°C ÷ +180°C elastom. rings SILICON  
**For available Accesories see pag. 15**

**European Certificate**  
 INERIS 10 ATEX 0029X  
**Standards:**  
 EN 60079 - 0 EN 60079 - 1  
 EN 60079 - 7 EN 60079 - 31  
**Directive ATEX 94/9/CE**

**International Certificate**  
 IECEX INE 14.0003X  
**Standards:**  
 IEC 60079 - 0 IEC 60079 - 1  
 IEC 60079 - 7 IEC 60079 - 31

**EQUIPMENT IDENTIFICATION**  
**Example: PM3B17**

TYPE	DIMENSION	MATERIAL	OVERALL CABLE DIAMETER
PM	1, 2, 3, 4, 5, 6 20, 25, 32, 40, 50, 63	B = Nickel Plated Brass S = Stainless Stell AISI 316L	See ød in table

**NOTE:** PM3B - KIT: cable gland equipped with the whole range of available rings.

Code	A [ NPT ]	Code	A [ISO]	L NPT (ISO)	C	CH1	CH2	E	øf	GI	ød range	Weight [Kg]
PA1B7	1/2"	PA20B7	M20x1.5	18 (16)	43	26	28	31	18,5	1G11	4 ÷ 7	0,135
PA1B9	"	PA20B9	"	"	"	"	"	"	"	1G12	7 ÷ 9,5	"
PA1B12	"	PA20B12	"	"	"	"	"	"	"	1G13	9 ÷ 12	"
PA2B12	3/4"	PA25B12	M25x1.5	18 (16)	43	31	34	37	23,5	2G11	9 ÷ 12	0,173
PA2B14	"	PA25B14	"	"	"	"	"	"	"	2G12	12 ÷ 14,5	"
PA2B17	"	PA25B17	"	"	"	"	"	"	"	2G13	14 ÷ 17	"
PA3B17	1"	PA32B17	M32x1.5	23 (16)	52	42	45	49	30,5	3G11	14 ÷ 17	0,385
PA3B20	"	PA32B20	"	"	"	"	"	"	"	3G12	17 ÷ 20	"
PA3B23	"	PA32B23	"	"	"	"	"	"	"	3G13	20 ÷ 23	"
PA4B23	1.1/4"	PA40B23	M40x1.5	23 (18)	52	46	48	53	36	4G11	20 ÷ 23	0,429
PA4B26	"	PA40B26	"	"	"	"	"	"	"	4G12	23 ÷ 26	"
PA4B29	"	PA40B29	"	"	"	"	"	"	"	4G13	26 ÷ 29	"
PA5B23	1.1/2"	PA50B23	M50x1.5	23 (18)	52	56	58	64	44	5G11	20 ÷ 23	0,655
PA5B26	"	PA50B26	"	"	"	"	"	"	"	5G12	23 ÷ 26	"
PA5B29	"	PA50B29	"	"	"	"	"	"	"	5G13	26 ÷ 29	"
PA5B32	"	PA50B32	"	"	"	"	"	"	"	5G14	29 ÷ 32	"
PA5B35	"	PA50B35	"	"	"	"	"	"	"	5G15	32 ÷ 35	"
PA6B39	2"	PA63B39	M63x1.5	23 (18)	52	65	68	75	53	6G11	35 ÷ 39	0,830
PA6B42	"	PA63B42	"	"	"	"	"	"	"	6G12	39 ÷ 42	"
PA6B45	"	PA63B45	"	"	"	"	"	"	"	6G13	42 ÷ 45	"

Also available in Stainless Steel AISI 316L version. Replace the letter S with B in the code.

**EXTERNAL SHROUDS SERIES SPM**

Material: PVC BLACK

The Shrouds for cableglands are used to prevent deposits of dust or other substances on the surface of the cableglend and cable entry.

Code	Dimensions	
	NPT	ISO
SPM1	1/2"	M20x1,5
SPM2	3/4"	M25x1,5
SPM3	1"	M32x1,5
SPM4	1.1/4"	M40x1,5
SPM5	1.1/2"	M50x1,5
SPM6	2"	M63x1,5



**EARTHING TAG SERIES ET**

Material: Nickel plated Brass (B)  
Stainless Steel AISI 316L (S)

The Earthing Tags are installed between the cable gland and the electrical equipment.

Code	Dimensions	Code	Dimensions
	ISO		NPT
ET20B	M20x1.5	ET1B	1/2"
ET25B	M25x1.5	ET2B	3/4"
ET32B	M32x1.5	ET3B	1"
ET40B	M40x1.5	ET4B	1.1/4"
ET50B	M50x1.5	ET5B	1.1/2"
ET63B	M63x1.5	ET6B	2"



**LOCKNUT SERIES DL**

Material: Nickel plated Brass (B)  
Stainless Steel AISI 316L (S)

The Locknuts are used to hold the cable gland, adaptors or plugs up to the walls of the equipment. Ensure the restraining to the entry of enclosure.

Code	Dimensions	Code	Dimensions	Dimens. Key
	ISO		NPT	
DL20B	M20x1.5	DL1B	1/2"	24
DL25B	M25x1.5	DL2B	3/4"	30
DL32B	M32x1.5	DL3B	1"	36
DL40B	M40x1.5	DL4B	1.1/4"	46
DL50B	M50x1.5	DL5B	1.1/2"	56
DL63B	M63x1.5	DL6B	2"	70



**SERRATED WASHER SERIES SR**

Material: Nickel plated Brass (B)  
Stainless Steel AISI 316L (S)

The Serrated washers are used together with lock nuts to prevent the loose of the attachment.

Code	Dimensions	Code	Dimensions
	ISO		NPT
SR20B	M20x1.5	SR1B	1/2"
SR25B	M25x1.5	SR2B	3/4"
SR32B	M32x1.5	SR3B	1"
SR40B	M40x1.5	SR4B	1.1/4"
SR50B	M50x1.5	SR5B	1.1/2"
SR63B	M63x1.5	SR6B	2"

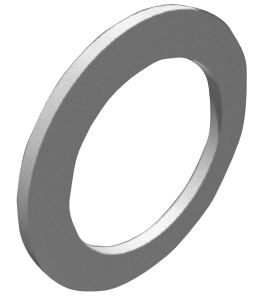


### GASKET SERIES SW

Material: Nylon White (N)

When installed according to the provided use and maintenance instructions, the cable glands must be able to provide, together with enclosure they are secured to the same grade of protection as the enclosure itself. In order to obtain the required grade of protection, it may be necessary to use a Gasket.

Code	Dimensions	
	ISO	NPT
SW20N	M20x1.5	1/2"
SW25N	M25x1.5	3/4"
SW32N	M32x1.5	1"
SW40N	M40x1.5	1.1/4"
SW50N	M50x1.5	1.1/2"
SW63N	M63x1.5	2"



### FILLING COMPOUND - BICOMPONENT RESIN REPM-1

Epoxide resin with an excellent resistance grade to chemicals, heat and water. It is available in 50 ml cartridges. It is used as sealant into the Cable Glands bushing series PMX, PMAX, and PMFX to prevent the propagation of the flames. Operative temperature: -20°C ÷ +80°C.

(\*) The value is purely indicative. The real number depends on the type and the dimension of the cable used.

Dim.	N° cableglands
1	20 (*)
2	10 (*)
3	5 (*)
4	3 (*)
5	2 (*)
6	1 (*)



### MANUAL APPLICATOR FOR 50ml CARTRIDGE SERIES APM50

Using with REPM-1 50ml cartridges. Lightweight, easy to use applicator. It is reusable. Quick and easy to load, usable with one hand. The article code is APM50.



### REPLACEMENT NOZZLE FOR 50ml CARTRIDGE SERIES BC-REPM-1

Replacement nozzle for REPM-1 50ml cartridge.

