

# NIPPLES

## NP Series

The Nipples Series NP are used to joint together equipments or other reducers with female entry.

### Features

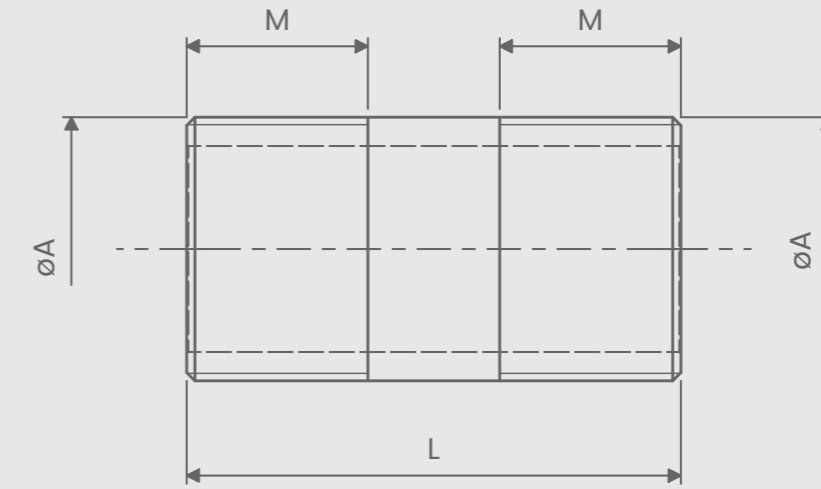
**Material used:** nickel plated brass CW614N

**Operating temperature:** -60°C up to 180°C

**NPT thread:** from 3/8" up to 3"

**ISO 262 thread:** from M16x1.5 up to M90x1.5

**Degree of protection:** IP66



ATEX & IECEx Equipment Data		
<b>Gas</b>	Group II Zone 1	Ex db I Mb Ex db IIC Gb Ex eb IIC Gb
<b>Dust</b>	Group II Zone 21	Ex tb IIIC Db IP66
ATEX Certificate		IECEx Certificate
INERIS 14 ATEX 0029X		IECEx INE 14.0038X

### Options available

- Stainless steel AISI 316L construction
- Stainless steel AISI 317L construction (available on demand)
- CW724R Brass (Lead <0,1%) (available on demand)

# NIPPLES

Code	øA	M	L
<b>NP38B</b>	3/8" NPT	16	40
<b>NP1B</b>	1/2" NPT	18	50
<b>NP2B</b>	3/4" NPT	18	50
<b>NP3B</b>	1" NPT	23	60
<b>NP4B</b>	1.1/4" NPT	23	60
<b>NP5B</b>	1.1/2" NPT	23	60
<b>NP6B</b>	2" NPT	23	60
<b>NP7B</b>	2.1/2" NPT	28	70
<b>NP8B</b>	3" NPT	28	70
<b>NP16B</b>	M16x1.5	16	40
<b>NP20B</b>	M20x1.5	16	50
<b>NP25B</b>	M25x1.5	16	50
<b>NP32B</b>	M32x1.5	16	60
<b>NP40B</b>	M40x1.5	18	60
<b>NP50B</b>	M50x1.5	18	60
<b>NP63B</b>	M63x1.5	18	60
<b>NP75B</b>	M75x1.5	20	70
<b>NP90B</b>	M90x1.5	20	70